

**Annual
SUSTAINABILITY
Report**

2015



OJI PAPÉIS ESPECIAIS



SUMMARY

- 04** SPECIAL FOR ALL
- 06** SAFETY AS VALUE
- 08** VALUING PEOPLE
- 10** PRODUCING WEALTH
- 12** EXCELLENCE PAPER
- 16** INNOVATIVE WORK
- 18** CONVEYING CONFIDENCE
- 20** TAKING CARE
- 22** ENCOURAGING RELATIONSHIPS



AGOSTINHO MONSSERROCCO

OJI PAPÉIS ESPECIAIS is a company that creates innovative values wherever it goes, always taking care to reconcile economic development with sustainability, thus contributing positively to the improvement of the world and the construction of a future with increasingly healthy and balanced prospects.

These values are closely linked to an organizational culture that places people as its greatest asset, being responsible for the company's growth, as well as comprising the strategic differential of the entire business.



Acting on behalf of society is one of our pillars. Over the years, our Sustainability Reports have shown that and, in this issue, we completed this concept through our achievements, ever more significant and important.

In the following pages, the reader will see that we went beyond our goals, making sure that our paper was special for our customers, partners and all the people who interact with us.

HAVE A GOOD READING!



06

SAFETY AS VALUE

OJI undertakes to provide pleasant and safe working environments, seeking to completely eliminate accidents with its own employees or providers, because people's health, safety and quality of life are embedded in the INTEGRITY value, which is essential for the company.

Therefore, all programs and actions are guided primarily towards preventing accidents and diseases, in addition to the appreciation of life.

Investments in training, lectures, awareness and other improvement initiatives, are constantly expanded in order to accelerate the achievement of the goal.

POCKETS

Communication tool aimed at taking corrective and preventive measures regarding attitudes and conditions outside the safety standards to prevent accidents in the company. Each professional has the goal to indicate at least one improvement situation a month.



SAFE BEHAVIOR PROGRAM - RISK OBSERVATION AT WORK: 309 PARTICIPANTS

Tool that promotes accident prevention through recognition, anticipation and reaction in the face of the risks observed in the execution of activities and processes by professionals in the company.





Drop of
50%
in the number
of accidents
compared to 2014

Increase of the
investments and
actions for the
safety and life
quality

**DDS: OVER 100 TOPICS WERE ADDRESSED
DURING THE YEAR**

Weekly dialogues with professionals in the workplace to talk about safety and quality of life.



08

VALUING PEOPLE

The commitment by OJI PAPÉIS ESPECIAIS to value and support the development of its professionals has led to the creation of its operating base, supported by its four organizational values: Sustainability, Integrity, Excellence and Synergy. Thus, all programs in the company aim to support professionals and their challenges, encouraging teamwork and sharing of information.

PRACTICAL MANAGEMENT

Focused on operational leadership, the program aims to align a single operation model focused in people management. It aims to provide guidance, leadership practices and develop high-performance attitude.

28 participants in 2015 **567** qualification hours



PRACTICAL MANAGEMENT

OJI LEADERSHIP PROGRAM

Covering the Coordination, Management and Board level, the OJI Leadership aims to improve and equip the managers in strategic people management, as well as align a single model of operation, respecting the company's work style and its core values.

28 participants in 2015 **532** qualification hours



OJI Leadership Program

TECHNICAL CHEMISTRY COURSE

Graduation of 17 professionals in the Technical Chemistry course in a partnership with the Colégio Cidade de Piracicaba (Anglo System of Education), 60% of tuition being paid by the company, as well as providing different schedules. The top five students were presented with a 100% reimbursement of the amounts invested, due to EXCELLENCE in their performances.



Graduation of the Chemistry Technician course.



One of the Practical Management meetings.

SCHOLARSHIP AND LANGUAGES

This program is granted to OJI professionals and can achieve reimbursement of up to 50% of the total amount of the course. Applications must be made at the end of each year and the grants are made by the OJI Approval Committee at the beginning of the year. All professionals can participate according to internal policy premises.

27 contemplated in 2015

REIMBURSEMENT,
OF UP TO
50%

GENERAL NUMBER OF TRAINING PARTICIPANTS IN 2015:

1269 PEOPLE

GENERAL TRAINING WORKLOAD:

17,949.05 HOURS

GERMINAR

Looking ahead, in August 2015, OJI PAPÉIS ESPECIAIS started the top-level internship program called Germinar. With a robust selection process, the program has 12 trainees participating in training, being closely monitored for development. In 2015, they received the challenge of performing a collective project to rescue the concept of recycling and selective collection in the organization, named Reciclaê.

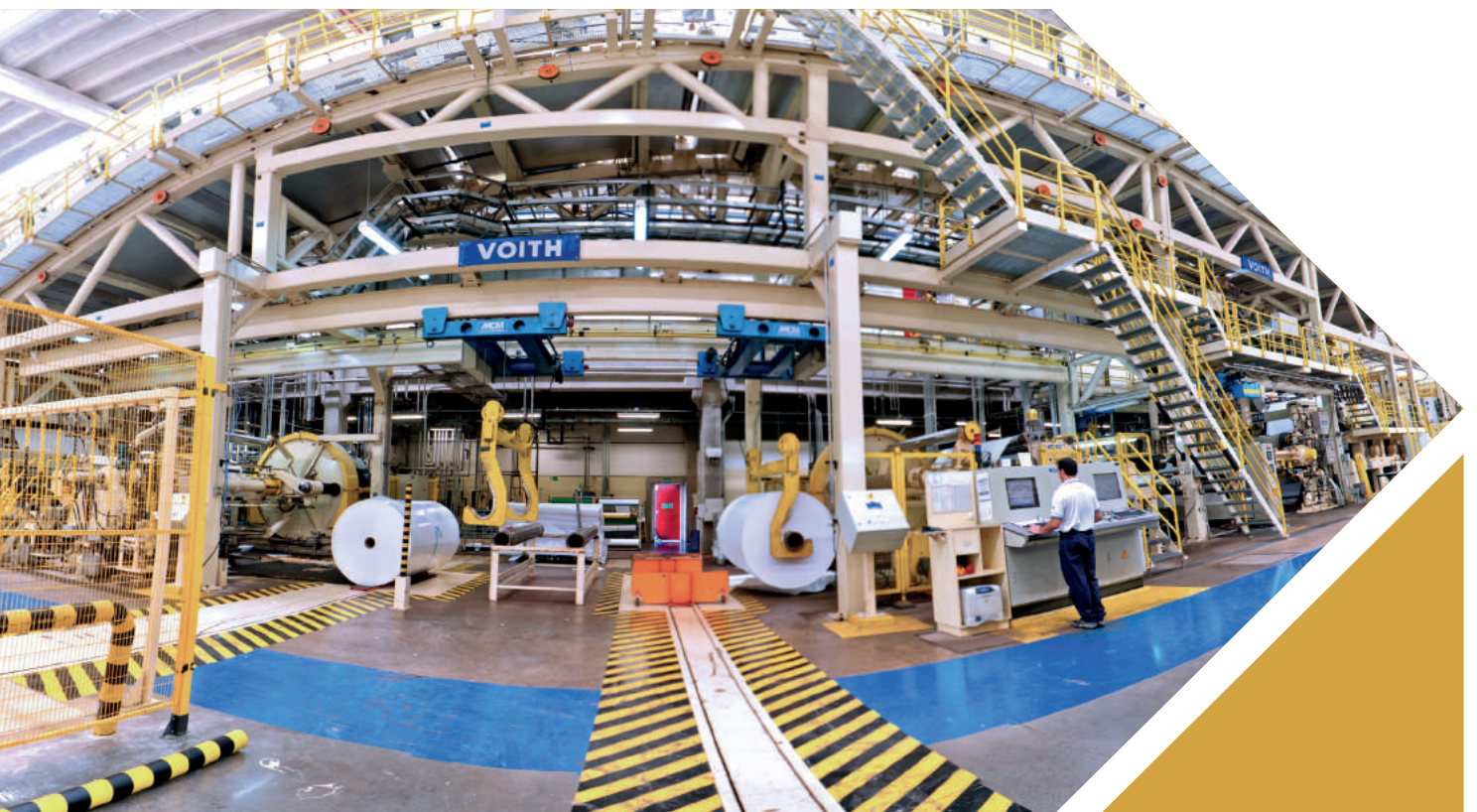


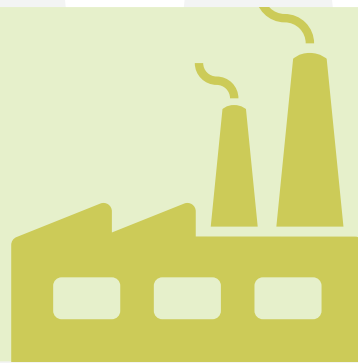
GERMINAR

10

PRODUCING WEALTH

When it comes to the production of thermal and carbonless paper, OJI PAPÉIS ESPECIAIS is more than a reference. Much of this recognition is due, without a doubt, to the high level of the company's production process. Comprised by a team of qualified, motivated and engaged professionals, OJI has the most advanced technologies for the production of specialty papers in Latin America. Investments in development and acquisition of new technologies are constantly made to increase the capacity not only to produce, but also to retain and satisfy customers, all with respect to the environment and professional development.





CHECK OUT THE HIGHLIGHTS OF PRODUCTION IN 2015:

- Consolidation in the production of **KPH 48 grams thermal paper**;
- Development of **the 105 g/m2 thermal paper**;
- Modernization of the MP-1** machine through the acquisition of a new inbox, increasing the reliability of production and improving the quality of the final product;
- Implementation of five groups in the coater PC-1**, increasing the availability of carbonless paper production.

Reduction of **7,1%** in the company's energy consumption.

Reduction of **2%** for quality during paper manufacturing.
of losses

Reduction of **13,3%** in the specific consumption of raw water.

12

EXCELLENCE PAPER

With work based on ethics and service EXCELLENCE, OJI PAPÉIS ESPECIAIS seeks to offer more than quality products, but shared, intelligent and creative solutions that meet the needs of its customers, which help to create value for the company.

The leadership in the domestic market and the satisfaction of more than 90% of its customers, showing that OJI creates value wherever it goes, as an innovative, sustainable and business allied company.

OJI DIFFERENTIALS

- Excellence Technical Advisory;
- Service flexibility;
- Relationship programs recognized in the market;
- Quality of transportation, logistics and customer relationship;

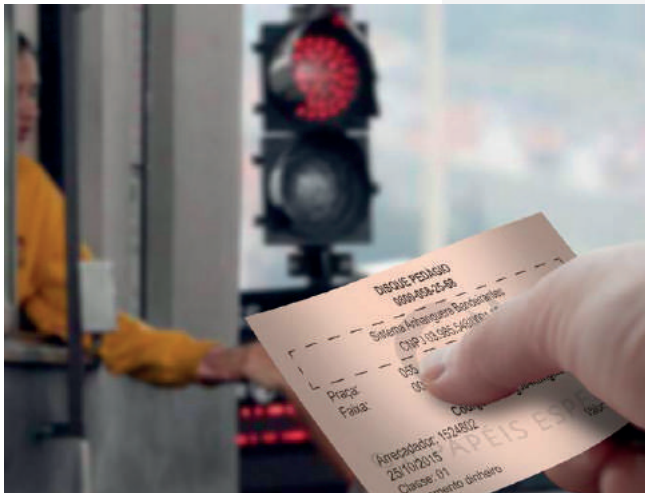
**SATISFACTION
OF OVER
90%
OF CUSTOMERS**

**MINIMUM
LEVEL
OF
TECHNICAL
PROBLEMS**



**Company with
largest variety of
specialty papers**

**IN
LATIN
AMERICA**



PAPER EXCELLENCE

EVENTS AND ACTIONS

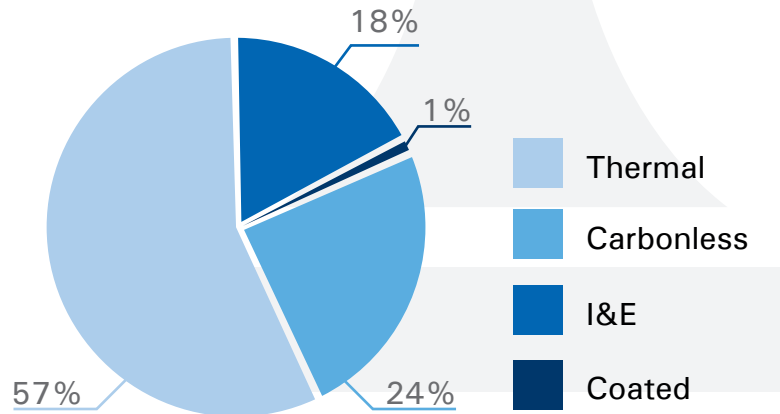
- Meeting with converters: event for OJI's thermal paper converter base, with the goal of bringing information and discussing issues of interest to the segment.
- AUTOCOM: main Latin American Trade Automation fair; participation with stand and massive business customer base visit.
- Peru Gaming Show: international fair dedicated to gaming and casinos with greater projection in Latin America; participation with stand and presence of export customers.
- International Congress and Exhibition of Pulp and Paper of the Brazilian Pulp and Paper Technical Association (ABTCP): participation with stand and consecration of the third year as a company awarded by ABTCP, as "Manufacturer of Specialty Papers".
- Meeting with domestic customers: event with renowned attractions, which brought together the main customers to share important information under an optimistic outlook for the future, strengthening the relationship with OJI.



Meeting with costumers 2015: event received a Carlos Alberto Sardenberg lecture



SPECIALTY PAPERS PRODUCTION



Increase of 35% in export of carbonless paper

16

INNOVATIVE WORK

In the constant search for innovative product and process development at competitive costs, the Research and Development area of OJI PAPÉIS ESPECIAIS offers a framework and a highly skilled and trained staff. Responsible for research and development of special coated paper (Thermal, Carbonless and Sublimatic), the industry works to develop efficient and high quality products to meet customer needs. In 2015, the sector contributed to the excellent results obtained by the company.

- ▲ Increase to the size of CB Microcapsules, optimizing production costs and encouraging the export of carbonless papers;
- ▲ Development and consolidation of the thermal paper used in ballot boxes;
- ▲ Integration of P&D activities in the plant process, adding technical support to equipment control and internal quality control when receiving raw materials;
- ▲ Development and consolidation of Termoticket 105 g/m² thermal paper for the foreign market of casinos;
- ▲ Development and consolidation of VIVAX PLUS 55 g/m² paper for application in textile sublimation.

**Development of BPS
(Bisphenol A free) technology**

FOR THERMAL PAPERS



Studies for the project of the new Multi Curtain Coater (MCC) applier

seeking an
increase
in the productivity
of thermal
papers

FISCAL INCENTIVE FOR TECHNOLOGICAL INNOVATION

As in previous years, OJI PAPÉIS ESPECIAIS obtained tax incentives through the 2014 development projects submitted and approved by MCTI (Ministry of Science, Technology and Innovation), linked to the federal government.

According to Law 11.196/2005, the "Good Law", companies that practice research and development of raw materials, products or processes, seeking technological innovation as a means for development of the business, receive a tax incentive to be deducted each year.

**23 PROJECTS RECEIVED THE
INCENTIVE, ADDING UP TO ABOUT
BRL 200 THOUSAND IN TAX BENEFIT.**

18

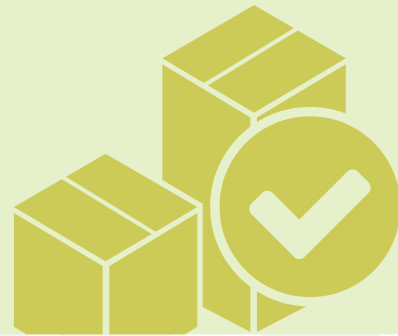
CONVEYING CONFIDENCE

OJI PAPÉIS ESPECIAIS is a special company even when it comes to its relationship with service providers. In 2015, it narrowed ties with its carriers aiming the sustainability, the environment and life quality of the professionals committed in this sector.



One of the OJI fleet trucks





**Dissemination
of the company's
products and
brand in**

**20 TRUCKS
that travel all
over the country**

- Smoke removal tests on all trucks that perform loading over four times within a month at the factory, in order to reduce the emission of greenhouse gases;
- Every 90 days, the drivers present the travel and rest time for the period, aiming at improving the quality of life of those involved in the process;
- Concern about the oil spill: once a year, the providing companies present a report showing how the oil used in trucks has been discarded.

In addition to sustainability measures, the OJI Logistics sector held internal measures prioritizing the customer. Learn about a few actions:

- 545 containers stuffed at the factory, ensuring product quality, reduced delivery time and cost of operation;
- New product conditioning, making better use of the capacity of the trucks, which allowed 89% of the truck's interior space to be used, against 76% in 2014;
- Improvement throughout the product delivery.

**Reduction of the
loading period**

IN OVER 35%

20

TAKING CARE OF THE ENVIRONMENT

OJI PAPÉIS ESPECIAIS has, in its operating base, values aimed at preserving the environment. From this premise, the Department of Environment develops programs to ensure that all of the company's actions are sustainable. The programs created and run by the area help in this mission, increasingly diminishing the impact of the organization's activities on nature.

ETE WASTE REDUCTION FOR LANDFILL

Approved by CETESB in 2015, the increased co-processing capacity of waste generated at ETE (Wastewater Treatment Plant) for the manufacture of ceramic bricks brought environmental and economic gains for OJI. The initiative has eliminated by 100% the sending of waste to the landfill and generated savings of 20.4% in costs.

20,4%

of economy in costs
with sending the waste
for co-processing

**ALL WASTE GENERATED AT
THE COMPANY IS REUSED FOR
THE MANUFACTURE
OF BRICKS**

BENEFITS OF USING WASTE TO MANUFACTURE BRICKS

- * Clay extraction reduction;
- * Electricity consumption saving in ceramics;
- * Reuse of waste in another process, as raw material;
- * Reduced environmental impact.



OTHER ACHIEVEMENTS IN 2015:

- 13% reduction in water consumption;
- ISO 14000 recertification of environmental management 9001 of quality management;
- FSC and CERFLOR recertification, certifying the origin of the supplied pulp, timber traceability to the paper delivered to the customer;
- Over 1000 m3/day reduction of natural gas, generating an economy superior to BRL 400 thousand/year.
- 99% of waste by OJI PAPÉIS ESPECIAIS are intended for the recycling process.

**GOAL
FOR
2016:**

**15% reduction
of common
waste.**

22

ENCOURAGING RELATIONSHIPS

For OJI, to be sustainable is also to relate well to the community and all those who are directly or indirectly part of the company's day-to-day. Thus, the company has a number of communication and interaction initiatives, supporting and encouraging various social projects that promote social, environmental, sports and cultural development, always believing that, to grow, we need to make society evolve.

CULTURAL POETRY, WRITING AND DRAWING CONTEST

With the theme The Green In My City, the OJI PAPÉIS ESPECIAIS Cultural Contest sought to promote debate and awareness in children and young people about issues related to the environment through essays, poems or drawings.



491

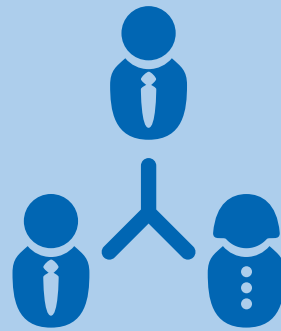
works
enrolled

36

participating
teaching
institutions in
the city

WALKING TOGETHER II

Developed by NGO Avistar and supported by OJI, the project provides monitoring and individualized intervention in the overall development of children and adolescents with exclusive diagnosis of visual impairment. In addition to integrating young people in the regular school system, providing the acquisition and establishment of educational content compatible with their learning level, as well as assistance for their stay in the school's physical environment.



OJI's Environmental Education Center

NEA - ENVIRONMENTAL EDUCATION CENTER

With the theme of Sustainability and Citizenship, OJI's NEA (Environmental Education Center) opened in 2015 to talk with children and adolescents about the role each one plays in building a more sustainable world. The space included the realization of numerous lectures and workshops, with an audience of over 200 children from schools and charities of Piracicaba.

QUICK MESSAGE

The Quick Massage project is a partnership with the AVISTAR NGO and promotes the well being of its professionals combined with the generation of employment and income. Visually impaired people served by the organization visit the company once a month and provide massage work for the professionals.

24

ENCOURAGING RELATIONSHIPS



WATCHATCHÁ

Approximately 130 people attended the two performances of the "Watchatchá" project held in the city of Piracicaba, in the Piracicaba Shopping Mall in 2015. The activity sought to combine science and fun, demystifying the field of physics and chemistry with very good humor.

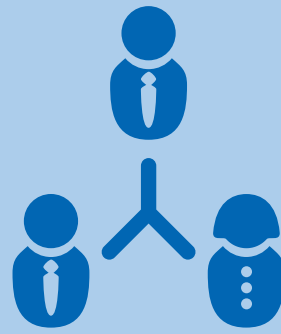
TAEKWONDO - EDUCATION AND PROGRESS

The project, sponsored by OJI PAPÉIS ESPECIAIS, provided Taekwondo classes for 150 young people from the city of Campinas that, through sport, were able to improve social relationships and grow in discipline and respect, fundamental characteristics for the practice of the sport.



ITINERANT PUPPETS THEATER

The Itinerant Puppets Repertory project sought, through the circulation of children's shows performed in a truck, to spread the message of sustainability and respect for the environment. Altogether, 2,500 people participated in the presentations.



YOUNG MUSICIANS

The project supported by OJI reached the mark of 200 children and young people attended in 2015, with 18 teachers involved in three schools directly serviced.

- 2 recitals by children and young people - audience of 400 people;
- 11 Master classes with renowned musicians from OSESP (Symphony Orchestra of the State of Sao Paulo) and Orchestra of the Municipal Theater of São Paulo, the best orchestras in Brazil;
- Young adults from the project being approved in music examinations like the one from USP (Universidade de São Paulo) and UNICAMP (Universidade Estadual de Campinas)

4 educational concerts in public schools at poor neighborhoods

AUDIENCE OF APPROXIMATELY 1,000 CHILDREN

PLAYING IN THE SQUARE

Performance of physical and recreational activities, seeking to arouse curiosity, belonging, doing and knowing, in addition to sharing activities, fun and games, establishing a link between the citizen and the community. The experience included sports, amusement and recreational activities, traditional games, inflatable toys, trampoline, board games, free design and health promotion, through measurement of blood pressure and zumba class.

AROUND
500 PEOPLE
PARTICIPATED
IN 2015

PROMOTING RELATIONS

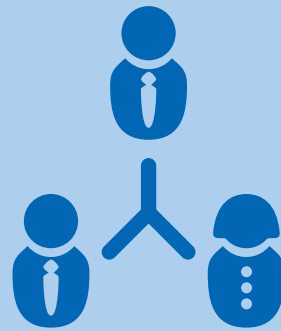


SPORTS AGAINST DRUGS

Named "The effect of running as an aid to drug addiction," the project has benefited around 400 people in 2015. The race was used as an instrument to assist in the struggle against addiction. The project was sponsored by OJI PAPÉIS ESPECIAIS and was conducted in a partnership with the Technology and Innovation Management Center (CGTI) and the Padre Haroldo Institution.

SUPPORTS AND INCENTIVES

During the year, OJI supported and encouraged over 10 events, actions and initiatives that provided the development of the community around it, such as the Festival of Nations, sponsoring the ticketing system and donating paper for the event. The company also sponsored the publication of the third edition of the Environmental Agenda of the Municipality 2016/2025 and part of the renovation of the Community Center in the Monte Alegre neighborhood, where the company is located.



CAMPAIGNS

- ▶ **Easter Campaign:** donation of nearly 70 Easter Eggs by company professionals for children in the Pipa Space;
- ▶ **Winter Campaign:** collection made within the company for the benefit of the city's people in need;
- ▶ **Home of the Elderly:** collection of almost 400 items, including groceries and hygienic materials for donation to the Home of the Elderly of Piracicaba, which was in an emergency situation due to lack of resources;
- ▶ **Christmas:** traditional campaign in the company, which provided the donation of gifts to 72 children of the Escola Baby Sauro, in Piracicaba.



Solidary Christmas Party with students from Escola Baby Sauro



OJI PAPÉIS ESPECIAIS

Via Comendador Pedro Morganti,
3393, Piracicaba - SP, 13415-900
www.ojipapeis.com.br

